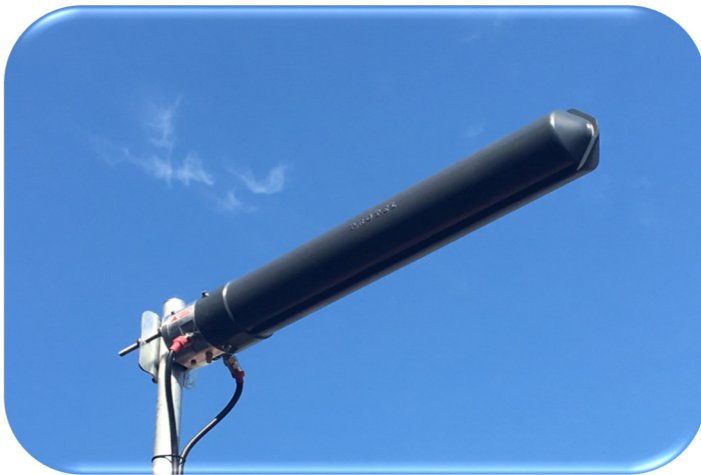




# Antenna type ARB91816.1

HIGH GAIN BROADBAND DIRECTIONAL ANTENNA

**2300 ÷ 2690 MHz**



- 5G-4G-LTE-IMT-E-WCS-MMDS-WIRELESS
- BAND 30-38-40-41-53-69-n7-n30-n38-n41-n90
- DOUBLE INPUT 4.3/10 FEED POL. +/- 45°
- FULL FLAME RETARDANT RADOME\*
- HIGH MECHANICAL PERFORMANCE
- 2 x 4.3/10 CONNECTOR "MIMO" READY
- RAILWAY – HIGHWAY - SUBWAY TUNNEL

• Antenna direzionale a larga banda ad alto guadagno. 5G-4G-LTE-IMT-E-WCS-MMDS-WIRELESS BANDA 30-38-40-41-53-69-n7-n30-n38-n41-n90-2300÷2700 MHz con polarizzazione +/-45°. Di serie con radome di protezione contro urti e forti agenti atmosferici in vetroresina \*anche in versione ignifuga. Tutta l'antenna è elettricamente a massa. Impiegata per coperture radio telefoniche in gallerie autostradali ferroviarie, metropolitane e ponti radio punto-punto. Adatta per sistemi MIMO.

• Directional antenna with high gain broadband 5G-4G-LTE-IMT-E-WCS-MMDS-WIRELESS BAND-30-38-40-41-53-69-n7-n30-n38-n41-n90-2300÷2700 MHz with +/-45° polarization. Built as standard with fiberglass protection cover against shocks and strong atmospheric agents\*also in flame retardant version. All parts of the antenna are electrically grounded. Specially used for radio coverage in motorway, railway, underground tunnels and point to point radio link. Suitable for MIMO systems.

## ELECTRICAL DATA

<b>Frequency range</b>	MHz	2300÷2690
<b>Bandwidth</b>	MHz	390
<b>Nominal impedance</b>	Ω	50
<b>Return loss / VSWR</b>	dB	≥ -14 / 1.5:1
<b>Polarization</b>		+/-45°
<b>Gain</b> (see table informations)		
<b>Gain Max 2300÷2500 MHz</b>	dBi	14.5
<b>Gain Max 2500÷2600 MHz</b>	dBi	15
<b>Gain Max 2600÷2690 MHz</b>	dBi	14.5
<b>H/E beamwidth 2450 MHz</b>	-3dB	18°
<b>Isolation</b> (see table informations)	≥ dB	15
<b>Connector</b>		2X 4.3-10f
<b>Max Power</b>	W	150
<b>Lightning protection</b>		All metal parts and inner connector are D.C. grounded

## MECHANICAL DATA

<b>Dimension length</b>	mm.	∅ 120 x 820
<b>Weight with clamps</b>	kg	4
<b>Mounting</b>	mm.	∅ 80
<b>Wind load front/side(180Km/h)</b>	Kg	1.8 - 15.5
<b>Ice protection *</b>		fiberglass full radome
<b>Packaging typ.</b>		150x20x20 cm. Kg 5.5

## MATERIALS

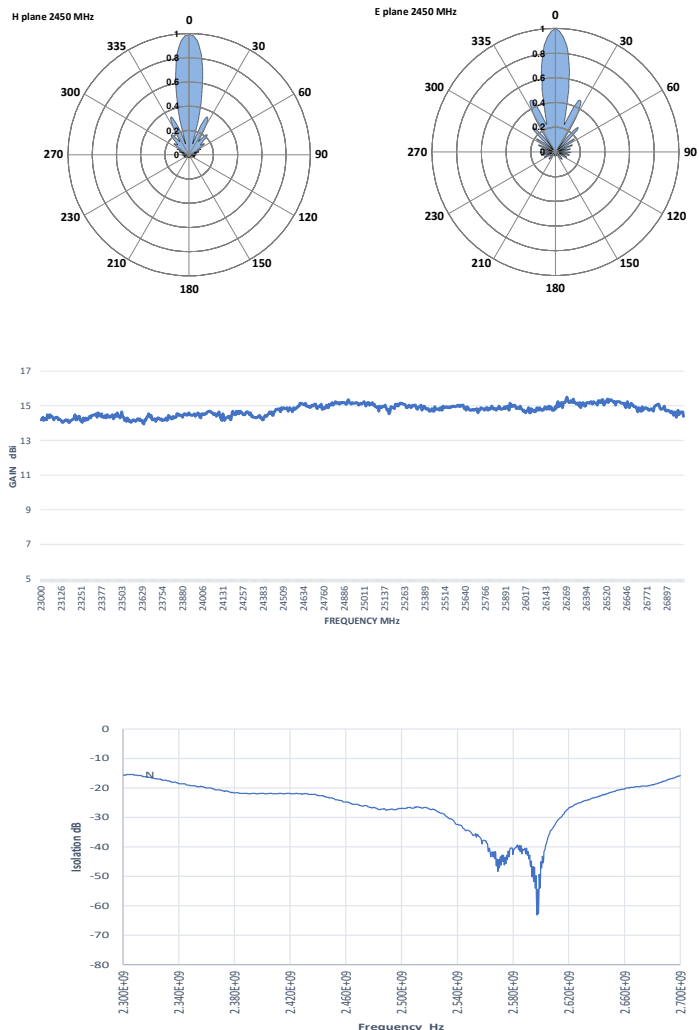
Aluminium, Teflon, Copper, Brass, Silver 5µm **RoHS Compliant**

## ACCESSORIES

**CODE**  
ARB91816.1RI FIBERGLASS FLAME RETARDANT RADOME

## ORDERING INFORMATION

**ARB91816.1** FIBERGLASS STANDARD RADOME  
**ARB918161RI** \* FIBERGLASS FLAME RETARDANT RADOME



In relazione alle normative in materia di responsabilità sui prodotti, segnaliamo che nel caso di utilizzo delle nostre antenne in condizioni operative particolari, quali ad esempio forti sollecitazioni dinamiche dovute a vento, vibrazioni o deformazioni delle strutture di sostegno, si possono verificare rotture del prodotto stesso e/o la caduta a terra. L'installatore che deve essere altamente qualificato, deve conoscere le normative nazionali di sicurezza in vigore, deve seguire le informazioni contenute nelle nostre istruzioni, deve verificare sempre l'adeguatezza del prodotto stesso alle condizioni operative del sito di installazione e deve controllare l'installazione operando la manutenzione periodica dell'impianto. ---- In relation to the laws concerning product liability, we notify you that in case you use our antennas in severe operative conditions such as, for example, strong wind, vibrations or distortions of the support structure, the product can break and/or fall down. The person who install the product must be skilled, must know the national security law in force, must follow the product instructions, must check that the product is compatible with the installation site and must control the installation with periodical maintenance.

Updating  
05/2023

PROTEL reserves the right to amend or modify any time in order to improve designs and to supply the best possible product described in this brochure without prior notification. copyright©

